

## Assembly instructions

# ACO leaf and insect screen for concrete light shafts

for an installation on light shaft gratings



We are pleased that you have chosen an ACO light shaft cover. We have compiled these instructions so that you can make the most of all the advantages of this product. It contains valuable information on the use of the leaf and insect protection light shaft cover. Please take a few minutes and read these instructions carefully. These instructions are part of the product, please keep them throughout the entire life of your light shaft cover and pass them on if necessary.

### Note

Pay particular attention to the safety instructions on page 2! These instructions are part of the product, please keep them throughout the entire life of your light shaft cover.

### Please note the following concerning proper use:

- The support for the light shaft insect screen can only be used with an underlying grating, this cover cannot be walked on without it!
- The light shaft cover are designed for use on private property.
- Special legal regulations apply for use on public paths or buildings, or for use in places of work. However, it is not the responsibility of the manufacturer to assess the environment of use in this respect. We expressly offer our products only for use on private property.
- For light shafts that ventilate a boiler room, please consult your chimney sweep or heating installer, or read the operating instructions of your heating system regarding the necessary ventilation cross-section of the light shaft and observe the current fire regulations!
- Not suitable for covering shaft with supply air or exhaust air from heat pumps!

## 1. Unpacking

- Check your product for possible damage before and after unpacking.
- Check that nothing is missing from the delivery.
- Please dispose of the packaging material at your local recycling centre.
- If service is required, please refer to point 6: Service.

## 2. Safety instructions



- When removing and reinserting the grating, ensure that it is firmly in place to avoid it falling into the light well.



- Ensure that the light shaftcover lies completely on the light shaftframe to avoid the risk of tripping.

### 3. Installation of leaf and insect screen

To place the light shaft cover on the grating, please observe our assembly instructions below.

### 5. Disclaimer

We accept no liability whatsoever for damage and injury resulting from improper use and negligent conduct, or from the customer's failure to observe these operating instructions or from only partial observation of them.

If the customer makes changes or repairs to the product without our written permission, our warranty obligation automatically expires.

### 4. Waste disposal/environmental protection

The insect screen is made of stainless steel and aluminium and are 100 % recyclable. Information on disposal is available from your local recycling centre or local authority.

### 6. Service

If anything is unclear to you when reading these instructions or when using the light shaft support, please contact us. We are happy to help. Under no circumstances should you make repairs or changes to your light shaft support yourself without consulting us.

## Installation instructions



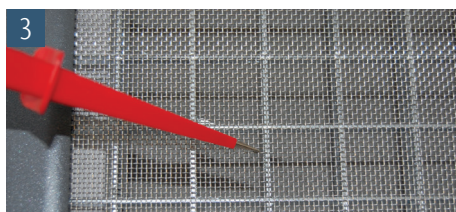
#### Included accessories

- 4 x Stainless steel screw with gasket washer (plumbing screws)
- 4 x Threaded clip



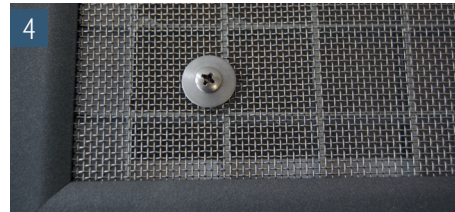
#### Required tools

Place a mandrel, or similar pointed object (knitting needle, etc.). Soft underlay, e.g. blanket, to place the cover on.



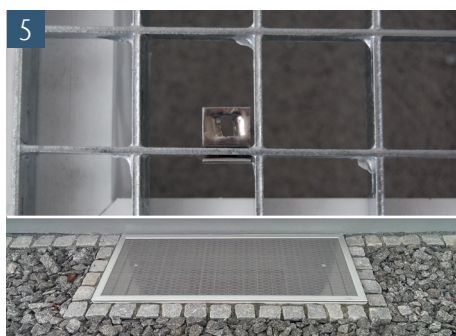
#### Positioning

Place the light shaft cover on the light shaft with the grating in place. The cover must lie against the building wall. The cover is screwed onto the grid with 4 fixing screws each. Use the mandrel to pre-mark the position for fixing screws in the insect screen / stainless steel mesh.



#### Inserting screws

Use the mandrel to bend the insect screen at the pre-marked points until the screws fit through. Pay attention to the position of the clips on the grating!



#### Fastening to the grating

Place the cover on the grating and insert the screws from above. Attach fasteners to the bottom of the grating. Screw screws into fasteners and tighten them by hand. Attach clips to the grating (attach to the underside of the grating). Place the cover on the grating. Check the position - and tighten the screws by hand.