

ACO Therm® large light shafts

Watertight installation

Installation surface: Waterproof concrete

Installation temperature: +5° C to +40° C



Light shaft size	Art no. with drainage opening	Article no. with closed bottom
150x100x70	380555	380559
150x150x70	380556	380560
200x100x70	380557	380561
200x150x70	380558	380562
Assembly kit		380563
Dichtfix sealing tape 5,5 m		380564

Installation steps

1. Check the light shaft for damage before installation.
Light wells with cracks, flaking or other damage are not suitable for pressurised watertight installation.
2. Clean the wall e.g. with a broom, remove formwork oil residues e.g. with a high-pressure cleaner or acetone, fill in missing areas on the wall with epoxy filler, smooth and allow to harden.
3. Insert the light shaft grating. To do this, insert the grating pins on the walls into the holes in the grating contact surface and press the grating into the grating contact surface.
4. Determine the position of the light shaft, to do this hold the light shaft with the grating inserted against the wall and mark the position of the two pear-shaped holes. The distance from the bottom edge of the window to the base of the light shaft should be ≥ 15 cm.
ACO recommends a distance of 30 cm between the bottom edge of the window and the bottom of the light shaft for light shafts installed in a pressurised watertight manner.



5. Now use a 10 mm drill to drill the two holes in the upper part of the pear-shaped securing anchors. Hammer in the two heavy-duty anchors so that they protrude by approx. 20 mm (measured from the light shaft flange) and then tighten the nuts.



6. Now drill all further specified holes with a 10 mm drill bit. All fixing points included in the light shaft flange must be used. Reinforcing steel may have to be drilled through.



7. Remove light shaft from wall. Clean the drilling dust off the wall and the holes.

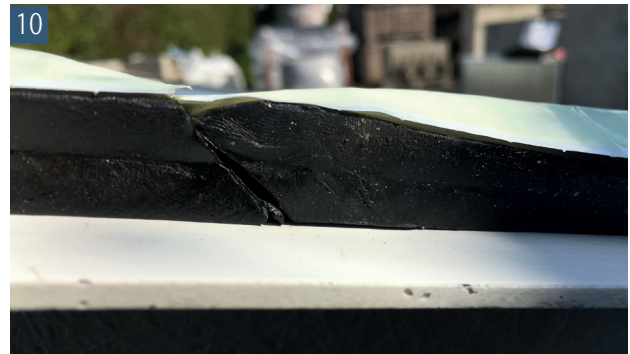
8. Insert dowels into drilled holes and hammer in flush. If necessary, screw the drainage connection or backwater valve into the light shaft opening. Closure caps can only be glued in at the factory by ACO.



9. Clean the light shaft flange. Place ACO Sealing Tape on the inside of the holes and press down. 1/3 of the holes should be covered with the fixed sealing tape. Ensure good adhesion to the light shaft, in particular in the radius area of the light shaft. Remove the protective film from the sealing tape.



10. If the Dichtfix sealing tape is to be applied, this should be done in the upper third of the light shaft. At joints, ACO Dichtfix must be cut to a 45° angle and fitted overlapping.



11. Hang the light shaft on the two heavy duty anchors and screw it on. Please make sure that the sealing tape does not slip. Insert the remaining screws and tighten them by hand. Tighten the screws again after approx. 1 hour. In doing so, press the Dichtfix to a thickness of about 5 mm.



12. Hook in and screw on the lift-off guard for the grating. If there is a risk of ground or accumulating seepage water rising above the fixing points of the grating lift-off guard, the screws must be sealed from the outside with Fix-O-Flex (Art. No. 315819).



Note:

Extension elements cannot be mounted water pressure tight.