



Maximum daylight incidence –
comfortable living in the basement

ACO Therm® 700 and 600 light shaft series



Natural light ensures a sense of well-being

More light. More space. More possibilities.
ACO has reinvented the concept of the cellar light shaft to meet the requirements of modern living spaces in the basement.





„With the new ACO light shaft series, we offer the possibility to create a bright oasis of well-being in the cellar.“

ACO Marketing Expert Sinje Dalhoff

High gloss for maximum light transmission into the cellar



The new ACO light shaft with a depth of 700 mm features a new lacquer-like surface on the inside. The high-gloss white coating ensures maximum light transfer into the cellar.

The drainage connection is located 250 mm from the wall and is therefore no longer in the insulation layer for insulation thicknesses of up to 240 mm. The ACO cellar light shaft can be installed to be pressure water-tight and equipped with a backflow stop.

In combination with the ACO extension elements, the system is flexible and adaptable to any construction project. Modern glass covers set completely new standards in terms of both design and function.

ACO Product information

- light shaft available in 4 sizes
B: 1500 mm and 2000 mm
H: 1000 mm and 1500 mm
- lacquer-like surface for maximum light transmission
- drainage connection outside the insulation layer
- 3-sided slope to the drainage connection
- pressurised water-tight installation possible
- ideal combination with large-format ACO cellar windows
- height adjustment through extension elements
- modern glass covers





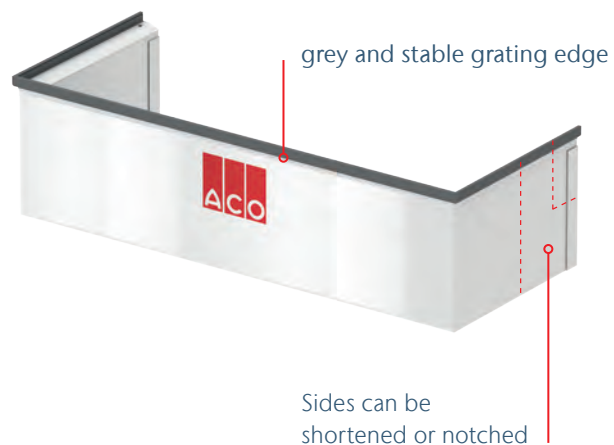
Extension elements for maximum flexibility

„The ACO extension elements allow the new light shaft to be adapted to any situation. My favourite is the elegant combination with the light shaft glass cover.“

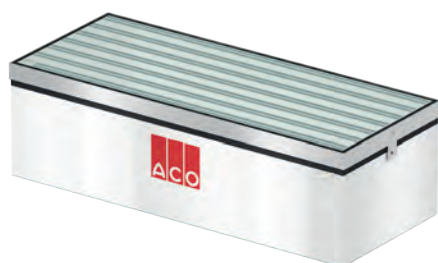
ACO Light shaft Product Manager
Sven Reinisch

With the **ACO extension elements**, simple adjustments can be made according to the height of the terrain.

The extension elements have a stable grey grating edge. The sides can be easily notched to allow optimum adaptation to the insulation or facing brick. The option to individually shorten the sides allows for a neat solution even with a protruding façade.



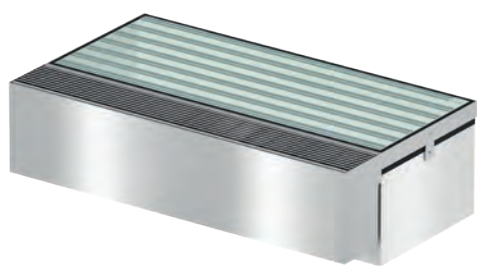
ACO large light shaft – design covers and accessories



Light shaft covers

Galvanised steel expanded metal gratings as well as 30/30 mesh gratings and 30/10 mesh gratings are available for the ACO light shaft with a depth of 700.

The new stylish glass cover provides a particularly large amount of light in the cellar and a modern design. The cover is fitted with a sealing frame and can be installed in a surface-watertight manner. It consists of 34 mm VSG clear glass with class R9 slip resistance.



Glass light shaft cover with ventilation box

The glass cover for the cellar light shaft is available with or without ventilation box. Three stainless steel grate designs are available for the ventilation box:



Mesh grating 30/10



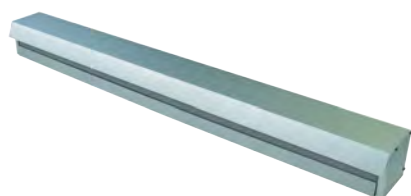
Longitudinal bar grating



Longitudinal rod grating 3 X 15 mm



The **ACO light shaft cover** made of aluminium and Plexiglas offers an attractive design together with a high level of functionality to protect against rain and leaf ingress. It is suitable for installing on light shaft grating.



The ventilation grating can additionally be fitted with a **ventilation box**. This is made of aluminium and is simply glued onto the light shaft cover.



ACO backflow stop
with building authority
approval



ACO drainage channel



ACO closure

Accessories for the drainage opening

The ACO light shafts can be connected via a DN 100 drainage connection with an ACO backflow stop or ACO drainage connection to a KG pipe DN 100. The ACO closure can be used to create a closed light shaft floor.

ACO Large Light Shafts

The Lightweight

For convenient transport
and easy installation

The new ACO Therm® plastic light shaft is a real lightweight despite its size. The light shaft body weighs less than 50 kilograms and can be easily moved to the right place on the construction site with the help of two people. This enables flexible working - even without a crane. Thanks to its low weight, the light shaft can be installed quickly and precisely.

In comparison with the concrete light shaft, the difference in weight becomes apparent. The GRP material is characterised by its lightness and durability. The plastic light shaft displays its advantages wherever low weight is important.

Visit us online:
www.buildingmaterial.aco
www.aco-hochbau.de



ACO Therm® Light Wells 700 mm depth

Depth	Width	Height	Weight
[mm]	[mm]	[mm]	[kg]
700	1500	1000	27,5
		1500	39
	2000	1000	36
		1500	45,5

ACO concrete light shaft (with base)

Depth	Width	Height	Weight
[mm]	[mm]	[mm]	[kg]
600	1520	1000	855
		1500	1160
	2050	1000	1269
		1500	1850

„Cellar expertise throughout - with the new light shaft, ACO offers the solution for all the requirements of modern living spaces in residential basements.“

ACO Cellar Business Unit Manager Jörg Luttmer





10

„The large-format soffit cellar windows are the perfect complement to the large ACO light shaft. Upright formats in single or double-leaf designs bring plenty of light and a cosy, modern atmosphere into the basement.“

ACO Window and backflow prevention
Product Manager Stefan Trippel



*24 h test as per ift Guidelines FE-07/01, test report 14-002562-PR01
available for viewing under: www.aco-hochbau.de/service/zertifikate

ACO Therm[®] soffit windows in large formats

For more light in the cellar and a pleasant feeling of living space, the ACO Therm[®] soffit windows are available in large formats (up to 1500 X 1500 mm) and in single or double-leaf designs. The 3-pane glazing, the construction depth of 82 mm and the multi-chamber hollow profiles ensure good insulating properties of the window. The pure white surface, the same colour of frame and sash create a simple and modern look.

The basement windows can be perfectly combined with the large ACO light shafts. This allows a particularly large amount of daylight to enter the cellar.



Upright format for modern house design

The ACO cellar protection system – watertight cellar planning



Basement windows

- flood-tight* version
- for new construction or renovation

Light shaft assembly pane

- for pressurised watertight installation
- with or without integrated window
- simple light shaft installation

Light well

- for pressurised watertight installation
- large selection of gratings and covers
- with drainage connections and closures

Backflow safety valve

- for non-faecal and faecal wastewater
- different designs for all demands



Ordering information

for ACO light shafts in 700mm depth



Selection from the ACO Therm® light shaft range










Figure	Information	Depth [mm]	Width [mm]	Height [mm]	Article no.
ACO Therm® Light Shaft 700 mm depth					
	Large light shaft	700	1500	1000	375155
				1500	375156
			2000	1000	375157
				1500	375158

Figure	Information	For light shaft depth [mm]	For insulation up to [mm]	Article no.
Drainage connections and closure devices				
	Drainage connection with leaf trap and odour trap	for 700	–	310079
	Backflow stop with general building authority approval Z-53.4-502	for 700	–	310060
	Closure for the drain opening in the light well	for 700	–	35583

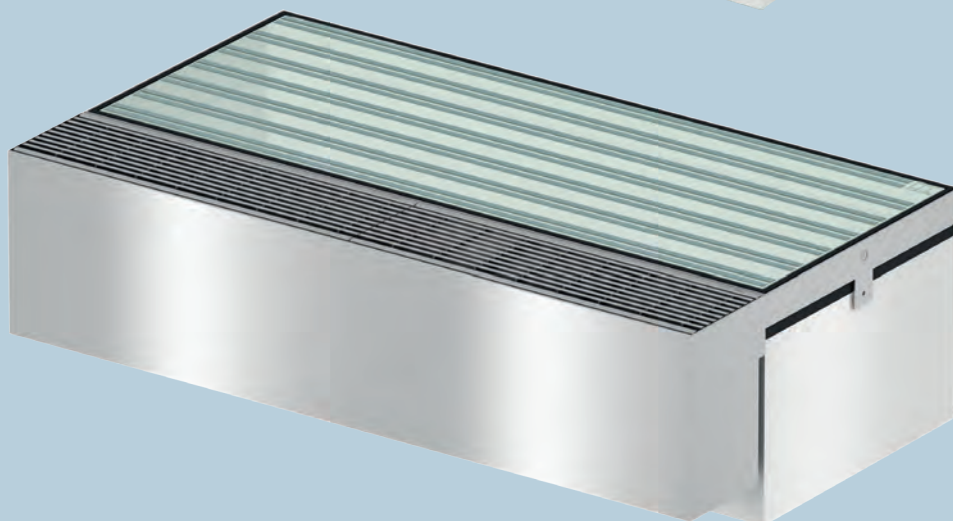
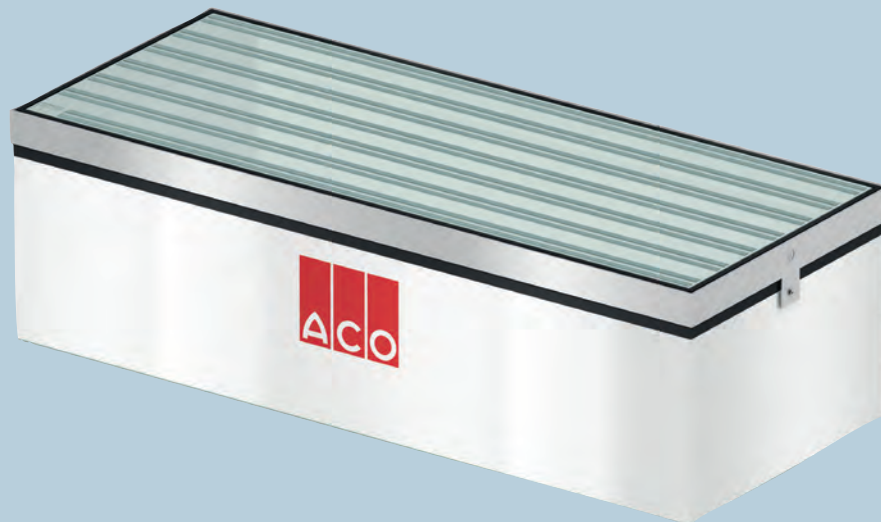
Installation kits - concrete wall

	Installation directly on concrete walls	for 700	–	38775
			100	380420
	Installation on concrete wall with perimeter insulation	for 700	140	380421
			160	380422
			200	380423
			240	380424
			300	380425


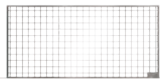
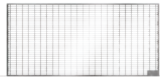


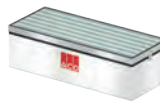
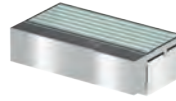

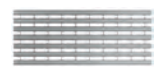

Pressurised watertight assembly on WIC wall

	Assembly kit made of stainless steel	for 700	–	380563
	Dichtfix sealing tape – 1 tape per light well	for 700	–	380564
	Grating anti-lift device	for 700	–	10106

Ordering information for gratings and covers



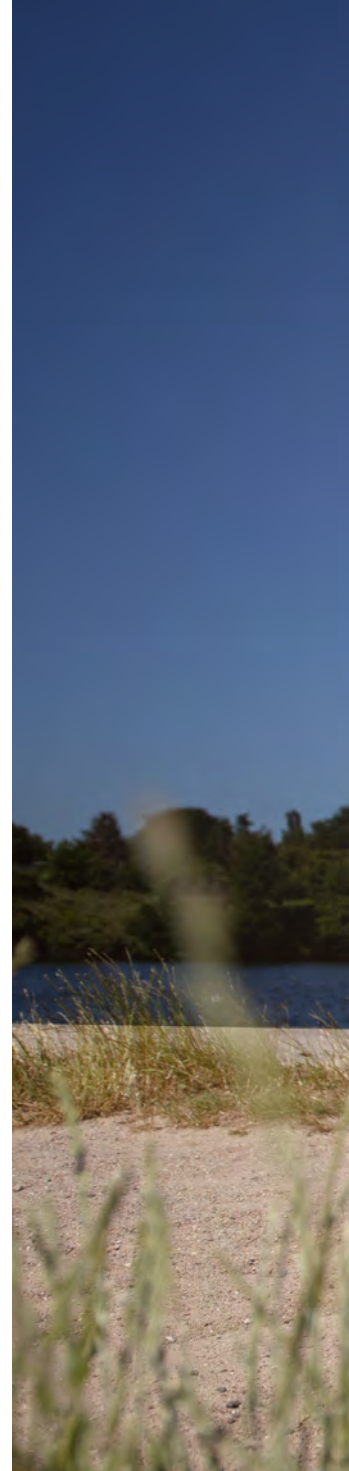
Selection from the ACO Therm® light shaft range

Figure	Information	Depth	Width	Height	Article no.
		[mm]	[mm]	[mm]	
Light shaft gratings – can be walked on					
	Expanded metal grating	700	1500	–	38767
			2000	–	38770
	Mesh grating 30/30	700	1500	–	38768
			2000	–	38771
	Mesh grating 30/30	700	1500	–	38769
			2000	–	38772
Extension element incl. installation kit					
	Variable overall height	700	1500	340	315906
	Fixed overall height	700	2000	295	315931
		700	1500	445	375441
		700	2000	445	375442
Light shaft glass cover					
	with sealing frame and 4-sided closed extension element	700	1500	290	375166
			2000	290	375167
	with sealing frame, 4-sided closed extension element and ventilation box (without grate)	700	1500	290	375178
			2000	290	375179
	Grating for ventilation box, stainless steel mesh grating 30/10		1500	2 pcs.*	375536
			2000	3 pcs.*	375537
	Grating for ventilation box, stainless steel longitudinal grating		1500	2 pcs.*	375541
			2000	3 pcs.*	375542
	Grating for ventilation box, stainless steel longitudinal bar grating 3 x 15 mm bar		1500	2 pcs.*	375546
			2000	3 pcs.*	375547

Contact

ACO Hochbau Vertrieb GmbH
Tel. 09736 41-60
bestellung@aco.com
www.aco-hochbau.de

* number required
per ventilation box



ACO Hochbau Vertrieb GmbH

Postfach 1125
97661 Bad Kissingen
Neuwirtshauser Straße 14
97723 Oberthulba
Tel. 09736 41-60
Fax 09736 41-69

hochbau@aco.com
www.aco-hochbau.de

**ACO. creating
the future of drainage**

